



**Adirondack
Park Agency**

Hamlet Expansion

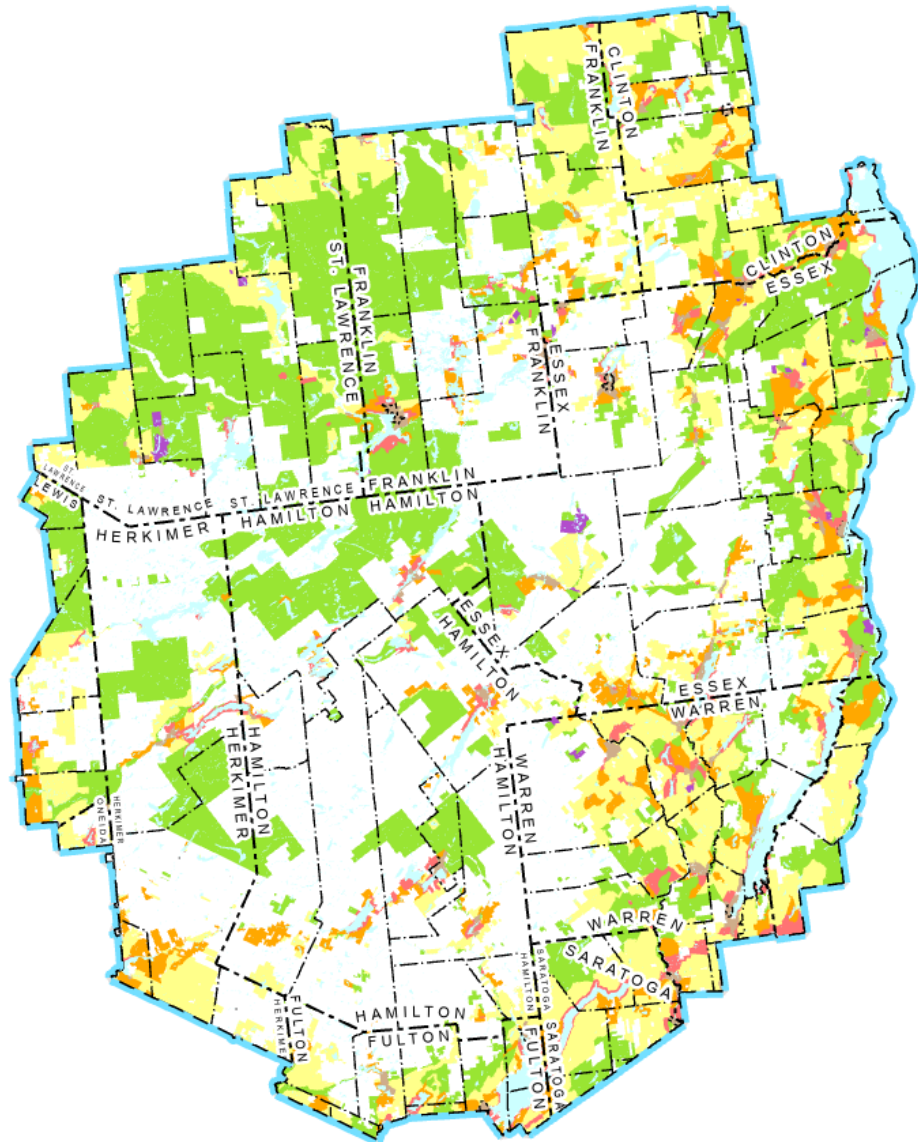
Amending the Adirondack Park Land Use and Development Plan Map




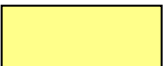


Matt Kendall, Environmental Program Specialist II

May 7, 2026

Adirondack Park Land Use and Development Plan

Adirondack Park Land Use and Development Plan Map




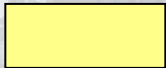




-  Hamlet
-  Moderate Intensity Use
-  Low Intensity Use
-  Rural Use
-  Resource Management
-  Industrial Use

Adirondack Park Land Use and Development Plan

Classifications

Minimum Average Lot Size

Hamlet		No Intensity Restrictions
Moderate Intensity Use		1.3 Acres
Low Intensity Use		3.2 Acres
Rural Use		8.5 Acres
Resource Management		42.7 Acres
Industrial Use		No Intensity Restrictions

Hamlet Areas

“the service and growth centers in the park”

“the building intensities ...will allow a high and desirable level of public and institutional services to be economically feasible”

“will discourage the haphazard location and dispersion of intense building development in the park’s open space areas”

Moderate Intensity Use

“primarily located near or adjacent to Hamlets”

“readily accessible to existing Hamlets”

“to provide for residential expansion and growth and to accommodate uses related to residential uses in the vicinity of Hamlets where community services can most readily and economically be provided”

Low Intensity Use

“readily accessible areas normally within reasonable proximity to a Hamlet”

“Where these areas are adjacent to or near hamlets, clustering homes on the most developable portions of these areas makes possible a relatively high level of residential units and local services”

Rural Use and Resource Management

“these areas are frequently remote from existing hamlet areas or are not readily accessible”

“these areas ... provide the essential open space atmosphere that characterizes the park”

“prevent strip development”

Adirondack Park Land Use and Development Plan

Classifications

Hamlet



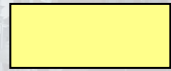
Moderate Intensity Use



Low Intensity Use



Rural Use



Resource Management



Industrial Use



Existing Population Centers

Public Facilities

Soils Suitable for Development

Open Space
Resource Limitations,

Density

Wetlands

Remote

Severe Slopes

Poor Soils

Agriculture

Rare Species

Adirondack Park Land Use and Development Plan



Adirondack Park Land Use and Development Plan



Amending the Adirondack
Park Land Use and
Development Plan Map

Standards for Map Amendment Decisions

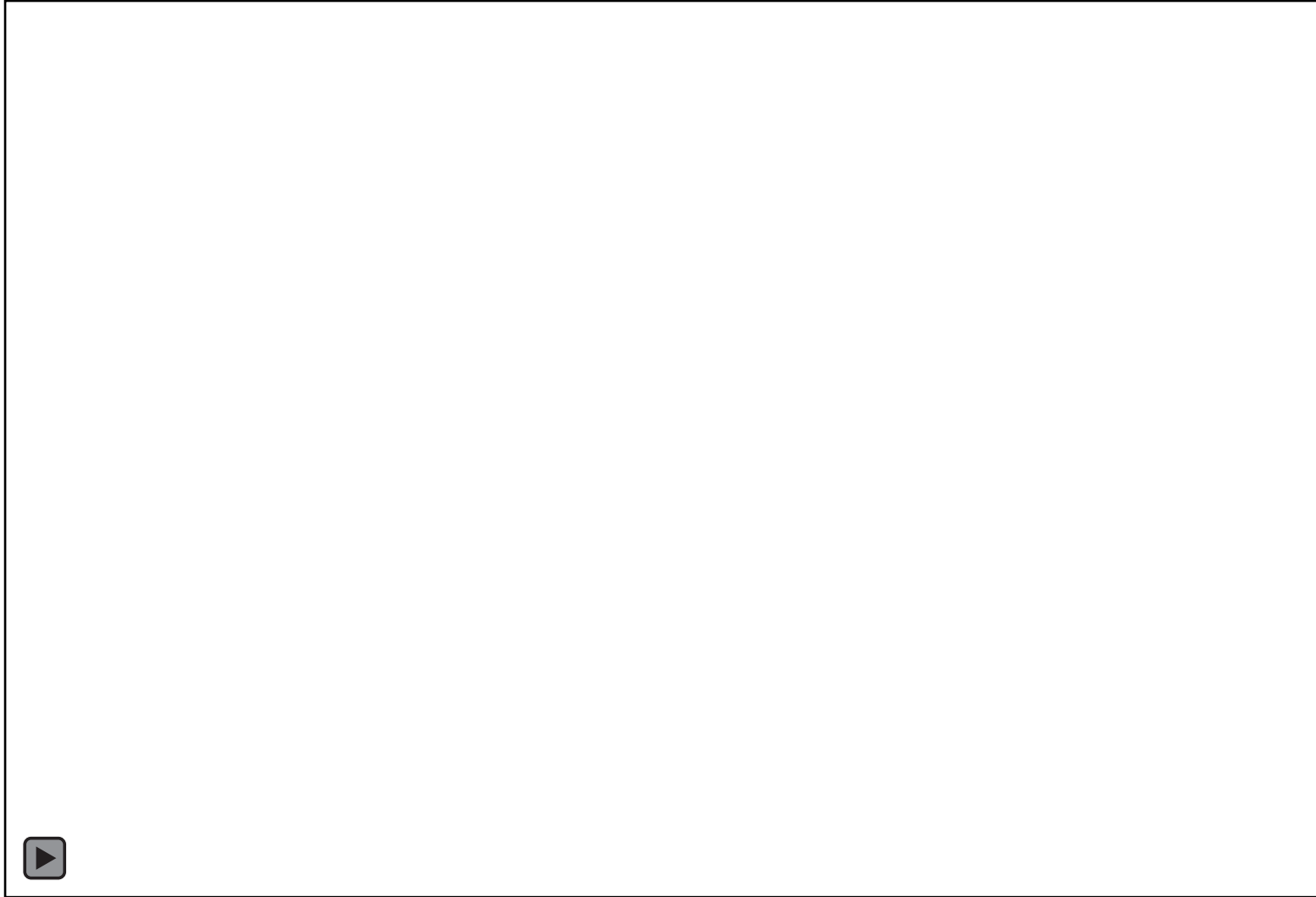
- §805 of APA Act
- Part 583 of APA Rules and Regulations



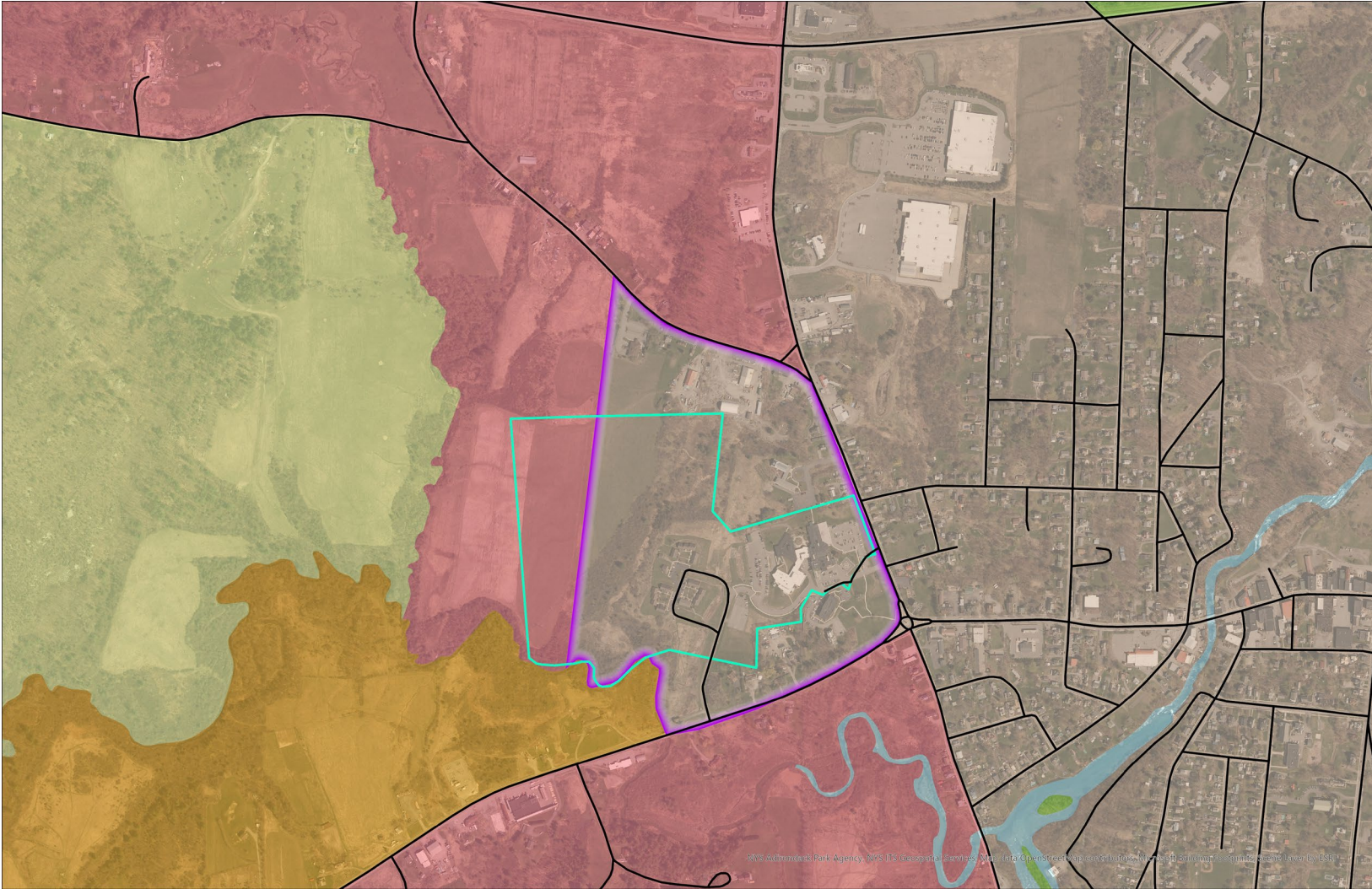
Standards for Map Amendment Decisions



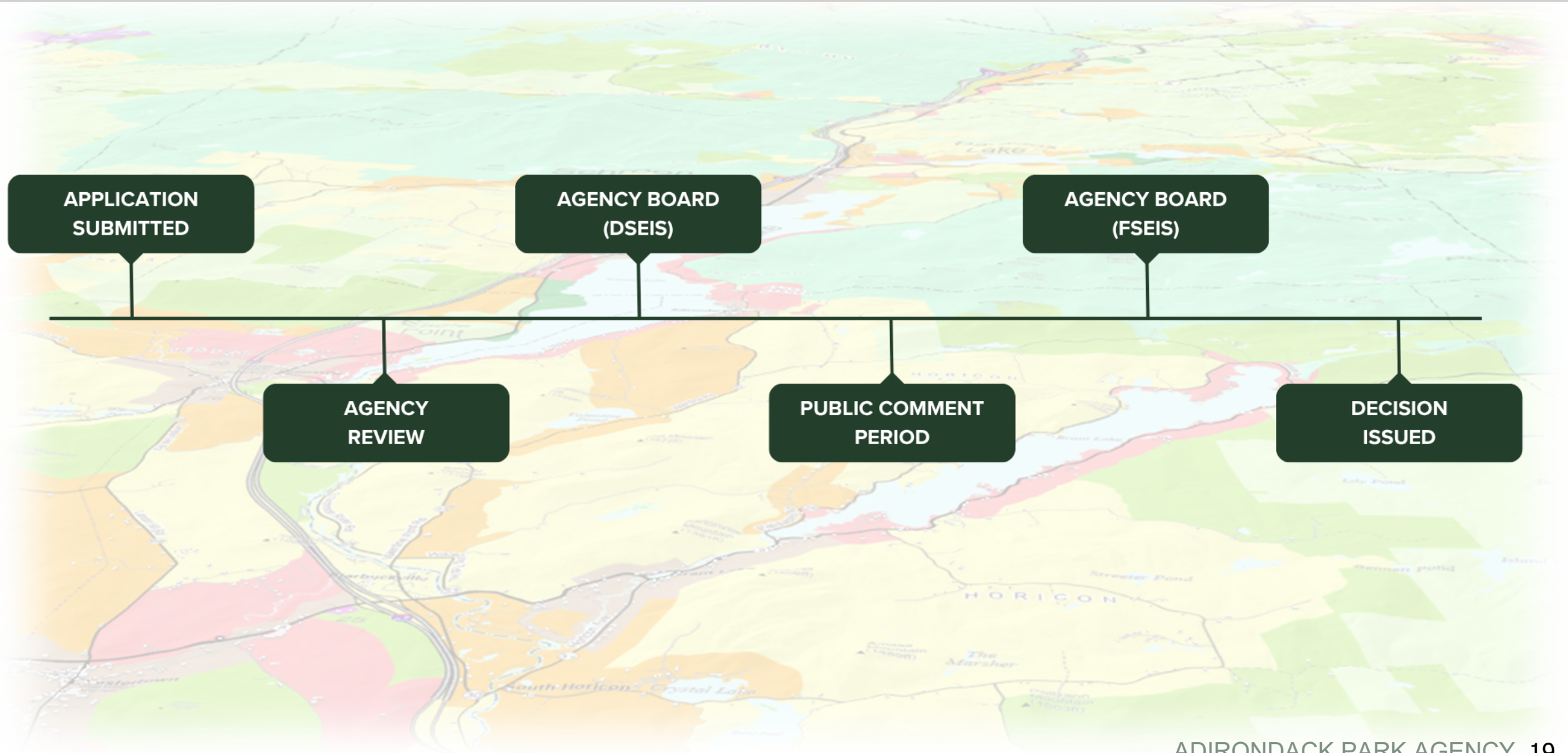
Standards for Map Amendment Decisions



Standards for Map Amendment Decisions



Map Amendment Process





**Adirondack
Park Agency**